



中国认可
国际互认
检测
TESTING
CNAS L4743

Test Report

No. AJFS2107006405FG

Date: AUG.10, 2021

Page 1 of 7

WENZHOU JINGWEI NEW MATERIAL CO.,LTD.

No.1515,DONGTANG ROAD, LONGGANG TOWN,WENZHOU CITY,ZHEJIANG

Sample Name: WOOD PLASTIC WALLBOARD

SGS Ref No.: NBIN2107008934SB

Style/Item No.: /

The above sample(s) was / were submitted and identified on behalf of the client. SGS is not responsible for the authenticity, integrity and results of the data and information and / or the validity of the conclusion arising therefrom. Results apply to the sample as received.

Test Requested:

EN 13501-1:2018 Fire classification of construction products and building elements - Part 1: Classification using data from reaction to fire tests.

Test Results: -- See attached sheet --

Test Period:

Sample Receiving Date : JUL.27, 2021

Test Performing Date : JUL.27, 2021 TO AUG.09, 2021

Signed for and on behalf of
SGS-CSTC Standards Technical Services Co., Ltd. Anji Branch

Allen Zou
Approved Signatory



Unless otherwise agreed in writing, this document is issued by the Company subject to its General Conditions of Service printed overleaf, available on request or accessible at <http://www.sgs.com/en/Terms-and-Conditions.aspx> and, for electronic format documents, subject to Terms and Conditions for Electronic Documents at <http://www.sgs.com/en/Terms-and-Conditions/Terms-e-Documents.aspx>. Attention is drawn to the limitation of liability, indemnification and jurisdiction issues defined therein. Any holder of this document is advised that information contained hereon reflects the Company's findings at the time of its intervention only and within the limits of Client's instructions, if any. The Company's sole responsibility is to its Client and this document does not exonerate parties to a transaction from exercising all their rights and obligations under the transaction documents. This document cannot be reproduced except in full, without prior written approval of the Company. Any unauthorized alteration, forgery or falsification of the content or appearance of this document is unlawful and offenders may be prosecuted to the fullest extent of the law. Unless otherwise stated the results shown in this test report refer only to the sample(s) tested and such sample(s) are retained for 30 days only.

Attention: To check the authenticity of testing / inspection report & certificate, please contact us at telephone: (86-755) 8307 1443, or email: CN.Doccheck@sgs.com

SGS-CSTC Standards Technical Services Co., Ltd.
Anji Branch Fire Technology Service

No. 301, Sunlight Road, 2 Block, Sunlight Industry Zone, Anji County, Zhejiang Province, China 313300 t (86-572) 5018825 f (86-572) 5018829 www.sgs.com.cn
中国·浙江·安吉县阳光工业园二区阳光大道301号 邮编: 313300 t (86-572) 5018825 f (86-572) 5018829 e sgs.china@sgs.com

Member of the SGS Group (SGS SA)

I. Test conducted

This test is conducted as per EN 13501-1:2018 Fire classification of construction products and building elements – Part 1: Classification using data from reaction to fire tests. And the test methods as following:

1. EN 13823:2020 Reaction to fire tests for building products - Building products excluding floorings exposed to the thermal attack by a single burning item.
2. EN ISO 11925-2:2020 Reaction to fire tests - Ignitability of products subjected to direct impingement of flame - Part 2: Single-flame source test.

II. Details of classified product

a) Nature and end use application

The product “Wood plastic wallboard” is defined as a decorative sheet. Its classification is valid for the following end use application: wall decoration.

b) Description

| | |
|-----------------|--|
| Description | Wood plastic wallboard |
| Color | White |
| Sample size | EN 13823: 1500mm×1000mm & 1500mm×495mm EN ISO 11925-2: 250mm×90mm |
| Thickness | 9.25 mm |
| Bulk Density | 778.96 kg/m ³ |
| Exposed surface | White with film surface |

Mounting and fixing:

Fibre cement board, with its density approximate 1800kg/m³, thickness approximate 9mm, is as the substrate. The test specimens are fixed mechanically to the substrate. With a vertical joint in the long wing of the specimens.

To be continued...



III. Test results

| Test method | Parameter | Number of tests | Results |
|-----------------------------------|--|-----------------|---------|
| EN 13823 | FIGRA _{0.2MJ} (W/s) | 3 | 162.2 |
| | FIGRA _{0.4MJ} (W/s) | | 162.2 |
| | Whether lateral flame spread (LFS) to the edge of specimen (Yes/No) | | No |
| | THR _{600s} (MJ) | | 9.2 |
| | SMOGRA (m ² /s ²) | | 158.3 |
| | TSP _{600s} (m ²) | | 435 |
| | Flaming particles or droplets (Yes/No) | | No |
| EN ISO 11925-2 Exposure = 30 s | Whether vertical flame spread (Fs) in excess of 150 mm within 60s (Yes/No) | 6 | No |
| | Ignition of the filter paper (Yes/No) | | No |

IV. Classification and field of application
a) Reference of classification

This classification has been carried out in accordance with **EN 13501-1:2018**.

b) Classification

The product, Wood plastic wallboard, in relation to its reaction to fire behaviour is classified:

| Fire behaviour | | Smoke production | | | | Flaming droplets | |
|----------------|---|------------------|---|---|---|------------------|--|
| C | — | s | 3 | , | d | 0 | |

Reaction to fire classification: C—s3, d0

Remark: The classes with their corresponding fire performance are given in annex A.

To be continued...



c) Field of application

This classification is valid for the following end use applications:

- With all substrates classified as A1 and A2
- With mechanically fixing
- Have joint

This classification is valid for the following product parameters:

- Characteristics as described in section II b) of this test reports.

Statement:

This declaration of conformity is only based on the result of this laboratory activity, the impact of the uncertainty of the results was not included.

The test results relate to the behaviour of the test specimens of a product under the particular conditions of the test; they are not intended to be the sole criterion for assessing the potential fire hazard of the product in use.

Warning:

This classification report does not represent type approval or certification of the product.

The test laboratory has, therefore, play no part in sampling the product for the test, although it holds appropriate references to the manufacturer's factory production control that is aimed to be relevant to the samples tested and that will provide for their traceability.

To be continued...



Unless otherwise agreed in writing, this document is issued by the Company subject to its General Conditions of Service printed overleaf, available on request or accessible at <http://www.sgs.com/en/Terms-and-Conditions.aspx> and, for electronic format documents, subject to Terms and Conditions for Electronic Documents at <http://www.sgs.com/en/Terms-and-Conditions/Terms-e-Documents.aspx>. Attention is drawn to the limitation of liability, indemnification and jurisdiction issues defined therein. Any holder of this document is advised that information contained hereon reflects the Company's findings at the time of its intervention only and within the limits of Client's instructions, if any. The Company's sole responsibility is to its Client and this document does not exonerate parties to a transaction from exercising all their rights and obligations under the transaction documents. This document cannot be reproduced except in full, without prior written approval of the Company. Any unauthorized alteration, forgery or falsification of the content or appearance of this document is unlawful and offenders may be prosecuted to the fullest extent of the law. Unless otherwise stated the results shown in this test report refer only to the sample(s) tested and such sample(s) are retained for 30 days only.

Attention: To check the authenticity of testing / inspection report & certificate, please contact us at telephone: (86-755) 8307 1443, or email: CN.Doccheck@sgs.com

SGS-CSTC Inspection & Testing Services Co., Ltd.
Anji Branch Fire Technology Service

No. 301, Sunlight Road, 2 Block, Sunlight Industry Zone, Anji County, Zhejiang Province, China 313300 t (86-572) 5018825 f (86-572) 5018829 www.sgs.com.cn
中国·浙江·安吉县阳光工业园二区阳光大道301号 邮编: 313300 t (86-572) 5018825 f (86-572) 5018829 e sgs.china@sgs.com

Annex A

Classes of reaction to fire performance for construction products excluding floorings and linear pipe thermal insulation products

| Class | Test method(s) | Classification criteria | Additional classification |
|-------|---|---|--|
| A1 | EN ISO 1182 ^a and | $\Delta T \leq 30^{\circ}\text{C}$, and $\Delta m \leq 50\%$, and $t_f = 0$ (i.e. no sustained flaming) | - |
| | EN ISO 1716 | $PCS \leq 2.0\text{MJ/kg}$ ^a and $PCS \leq 2.0\text{MJ/kg}$ ^{b,c} and $PCS \leq 1.4\text{MJ/m}^2$ ^d and $PCS \leq 2.0\text{MJ/kg}$ ^e | - |
| A2 | EN ISO 1182 ^a or | and $\Delta T \leq 50^{\circ}\text{C}$, and $\Delta m \leq 50\%$, and $t_f \leq 20\text{ s}$ | - |
| | EN ISO 1716 | | - |
| | EN 13823 | $FIGRA \leq 120\text{W/s}$ and $LFS < \text{edge of specimen}$ and $THR_{600s} \leq 7.5\text{MJ}$ | Smoke production ^f and Flaming droplets/particles ^g |
| B | EN 13823 and | $FIGRA \leq 120\text{W/s}$ and $LFS < \text{edge of specimen}$ and $THR_{600s} \leq 7.5\text{MJ}$ | Smoke production ^f and Flaming droplets/particles ^g |
| | EN ISO 11925-2 ⁱ Exposure = 30s | within 60s $F_s \leq 150\text{mm}$ | |
| C | EN 13823 and | $FIGRA \leq 250\text{W/s}$ and $LFS < \text{edge of specimen}$ and $THR_{600s} \leq 15\text{MJ}$ | Smoke production ^f and Flaming droplets/particles ^g |
| | EN ISO 11925-2 ⁱ Exposure = 30s | $F_s \leq 150\text{mm}$ within 60 s | |
| D | EN 13823 and | $FIGRA \leq 750\text{W/s}$ | Smoke production ^f and Flaming droplets/particles ^g |
| | EN ISO 11925-2 ⁱ Exposure = 30s | $F_s \leq 150\text{mm}$ within 60 s | |
| E | EN ISO 11925-2 ⁱ Exposure = 15s | $F_s \leq 150\text{mm}$ within 20 s | flaming droplets/particles ^h |

To be continued...



SGS-CSTC Inspection & Testing Services Co., Ltd.
Anji Branch Fire Technology Service

Unless otherwise agreed in writing, this document is issued by the Company subject to its General Conditions of Service printed overleaf, available on request or accessible at <http://www.sgs.com/en/Terms-and-Conditions.aspx> and, for electronic format documents, subject to Terms and Conditions for Electronic Documents at <http://www.sgs.com/en/Terms-and-Conditions/Terms-e-Documents.aspx>. Attention is drawn to the limitation of liability, indemnification and jurisdiction issues defined therein. Any holder of this document is advised that information contained hereon reflects the Company's findings at the time of its intervention only and within the limits of Client's instructions, if any. The Company's sole responsibility is to its Client and this document does not exonerate parties to a transaction from exercising all their rights and obligations under the transaction documents. This document cannot be reproduced except in full, without prior written approval of the Company. Any unauthorized alteration, forgery or falsification of the content or appearance of this document is unlawful and offenders may be prosecuted to the fullest extent of the law. Unless otherwise stated the results shown in this test report refer only to the sample(s) tested and such sample(s) are retained for 30 days only.

Attention: To check the authenticity of testing / inspection report & certificate, please contact us at telephone: (86-755) 8307 1443, or email: CN.Doccheck@sgs.com

No. 301, Sunlight Road, 2 Block, Sunlight Industry Zone, Anji County, Zhejiang Province, China 313300 t (86-572) 5018825 f (86-572) 5018829 www.sgs.com.cn
中国·浙江·安吉县阳光工业园二区阳光大道301号 邮编: 313300 t (86-572) 5018825 f (86-572) 5018829 e sgs.china@sgs.com

| | | |
|---|--|------------------------|
| F | EN ISO 11925-2 ⁱ Exposure = 15 s | Fs > 150mm within 20 s |
| <p>^a For homogeneous products and substantial components of non-homogeneous products.</p> <p>^b For any external non-substantial component of non-homogeneous products.</p> <p>^c Alternatively, any external non-substantial component having a PCS $\leq 2,0$ MJ/m², provided that the product satisfies the following criteria of EN 13823: FIGRA ≤ 20 W/s, and LFS < edge of specimen, and THR_{600s} $\leq 4,0$ MJ, and s1, and d0.</p> <p>^d For any internal non-substantial component of non-homogeneous products.</p> <p>^e For the product as a whole.</p> <p>^f s1 = SMOGRA ≤ 30m²/s² and TSP_{600s} ≤ 50m²; s2 = SMOGRA ≤ 180m²/s² and TSP_{600s} ≤ 200m²; s3 = not s1 or s2</p> <p>^g d0 = No flaming droplets/ particles in EN 13823 within 600 s; d1 = no flaming droplets/ particles persisting longer than 10 s in EN 13823 within 600 s; d2 = not d0 or d1.</p> <p>Ignition of the paper in EN ISO 11925-2 results in a d2 classification.</p> <p>^h Pass = no ignition of the paper (no classification); Fail = ignition of the paper (d2 classification).</p> <p>ⁱ Under conditions of surface flame attack and, if appropriate to the end-use application of the product, edge flame attack.</p> | | |

Remark: The test method EN ISO 11925-2:2020 is not in CMA accredited scope. The test report shall only be used for client internal reference.

To be continued...

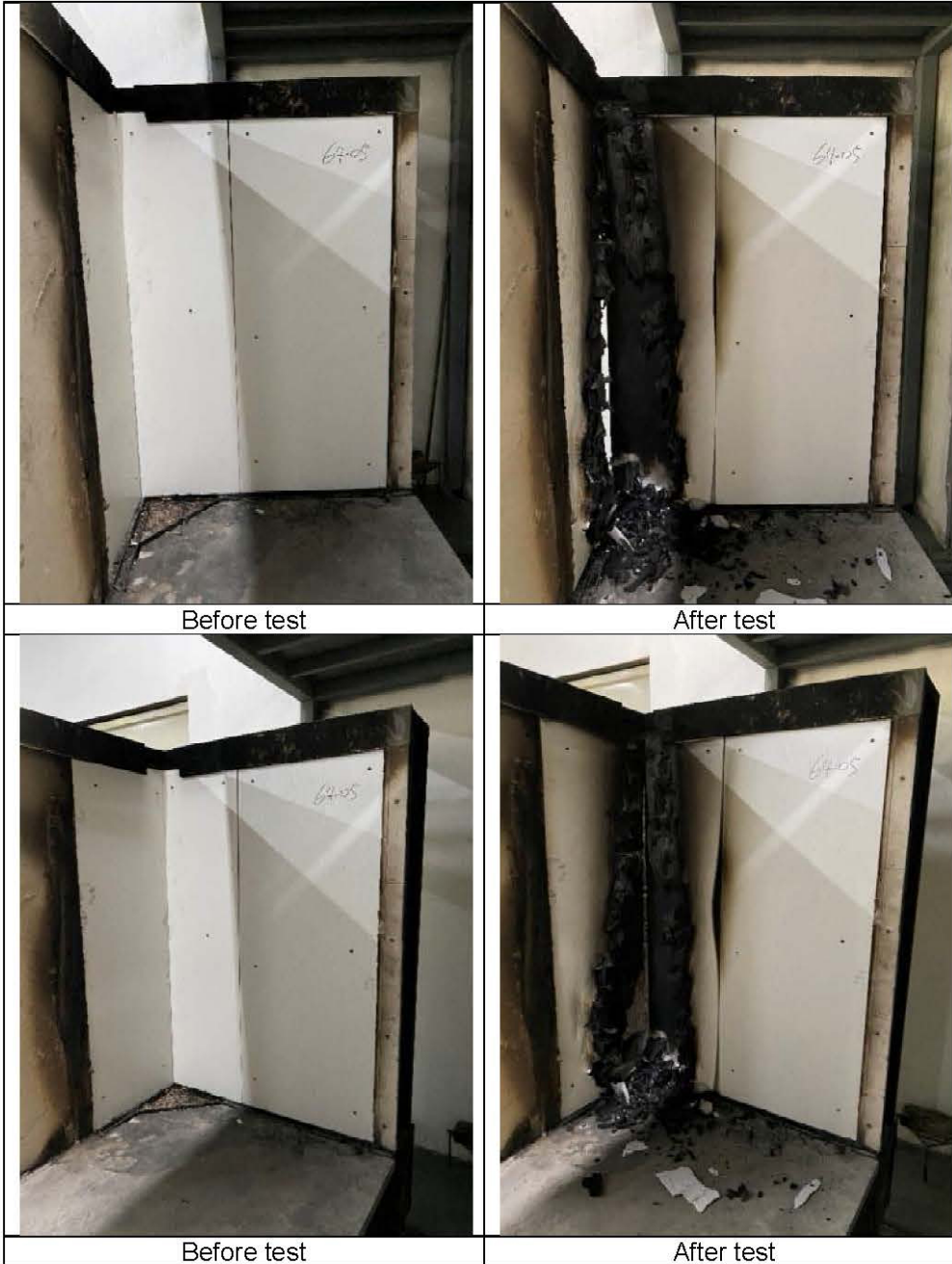


Unless otherwise agreed in writing, this document is issued by the Company subject to its General Conditions of Service printed overleaf, available on request or accessible at <http://www.sgs.com/en/Terms-and-Conditions.aspx> and, for electronic format documents, subject to Terms and Conditions for Electronic Documents at <http://www.sgs.com/en/Terms-and-Conditions/Terms-e-Documents.aspx>. Attention is drawn to the limitation of liability, indemnification and jurisdiction issues defined therein. Any holder of this document is advised that information contained hereon reflects the Company's findings at the time of its intervention only and within the limits of Client's instructions, if any. The Company's sole responsibility is to its Client and this document does not exonerate parties to a transaction from exercising all their rights and obligations under the transaction documents. This document cannot be reproduced except in full, without prior written approval of the Company. Any unauthorized alteration, forgery or falsification of the content or appearance of this document is unlawful and offenders may be prosecuted to the fullest extent of the law. Unless otherwise stated the results shown in this test report refer only to the sample(s) tested and such sample(s) are retained for 30 days only.

Attention: To check the authenticity of testing / inspection report & certificate, please contact us at telephone: (86-755) 8307 1443, or email: CN.Doccheck@sgs.com

No. 301, Sunlight Road, 2 Block, Sunlight Industry Zone, Anji County, Zhejiang Province, China 313300 t (86-572) 5018825 f (86-572) 5018829 www.sgs.com.cn
 中国·浙江·安吉县阳光工业园二区阳光大道301号 邮编: 313300 t (86-572) 5018825 f (86-572) 5018829 e sgs.china@sgs.com

Photo Appendix:



Before test

After test

Before test

After test

SGS authenticate the photo on original report only

End of Report



SGS-CSTC Inspection & Testing Services Co., Ltd.
Anji Branch Fire Technology Service

Unless otherwise agreed in writing, this document is issued by the Company subject to its General Conditions of Service printed overleaf, available on request or accessible at <http://www.sgs.com/en/Terms-and-Conditions.aspx> and, for electronic format documents, subject to Terms and Conditions for Electronic Documents at <http://www.sgs.com/en/Terms-and-Conditions/Terms-e-Document.aspx>. Attention is drawn to the limitation of liability, indemnification and jurisdiction issues defined therein. Any holder of this document is advised that information contained hereon reflects the Company's findings at the time of its intervention only and within the limits of Client's instructions, if any. The Company's sole responsibility is to its Client and this document does not exonerate parties to a transaction from exercising all their rights and obligations under the transaction documents. This document cannot be reproduced except in full, without prior written approval of the Company. Any unauthorized alteration, forgery or falsification of the content or appearance of this document is unlawful and offenders may be prosecuted to the fullest extent of the law. Unless otherwise stated the results shown in this test report refer only to the sample(s) tested and such sample(s) are retained for 30 days only.

Attention: To check the authenticity of testing / inspection report & certificate, please contact us at telephone: (86-755) 8307 1443, or email: CN.Doccheck@sgs.com

No. 301, Sunlight Road, 2 Block, Sunlight Industry Zone, Anji County, Zhejiang Province, China 313300 t (86-572) 5018825 f (86-572) 5018829 www.sgs.com.cn
中国·浙江·安吉县阳光工业园二区阳光大道301号 邮编: 313300 t (86-572) 5018825 f (86-572) 5018829 e sgs.china@sgs.com